

THE ADONI BENCH



SPECIFICATIONS

CONSTRUCTION:

Shown here upholstered in chic grey Alcantara, with legs in black lacquered walnut.

Construction: Solid beech and birch frame with a coil sprung seat and biscuit button tufted back.

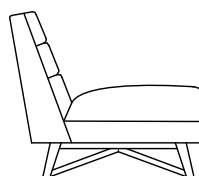
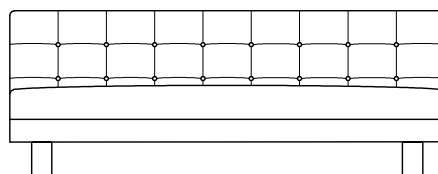
Passes BS EN 16139: 2013 Test Level 2

MEASUREMENTS:

H76 x L196 x D85cm's (Seat Height 42cm's)

REGISTERED DESIGN NO:

6012138



FINISH OPTIONS

MATERIALS:	FINISHES:	COM REQUIREMENTS (M)*:
Walnut	Oiled / Ebonised / Black Lacquered	+10.5 Fabric / +15.0 Leather (3 Seater)
		* Patterned fabrics, please provide repeat

Handmade to order at Stuart Scott, Wiltshire, England.

Signed and individually numbered.

20 Paxcroft Farm, Hilperton, Wiltshire, BA14 6JB, England
+44 (0)1225 753 592 | enquiries@stuartscott.co.uk

© Stuart Scott Associates Ltd. All rights reserved.



STUART SCOTT®

ENGLAND

STUARTSCOTTFURNITURE.COM